

ELEVATE

NEW YORK IMPACT REPORT 2020-2021



A MESSAGE FROM OUR EXECUTIVE DIRECTOR

As we prepare to say goodbye to another year, we would like to take a moment to celebrate the dedicated community that lifted us up every day in 2021. You stood alongside us with your financial investment, helping us expand our network, sharing your professional expertise and spreading the word about our mission. Our combined strength is what makes us successful as an organization. It allows us to pave the way for continued access to opportunities, networks, and skills for the youth we serve.

Our successes were achieved in a time when we were forced to adapt to very adverse circumstances. We are excited to enter a new chapter where we will focus heavily on organizational capacity building. In the year ahead our goal is to welcome two additional Teacher Mentors to our program team. Expanding the capacity of our program team will allow us to serve 170 additional students. We will also collaborate with Young Life Camp to offer students a week away at Lake Campion in Glen Spey, New York. Our goal is to add the following program components by Spring 2023.

- No less than two additional high school classes
- A new middle school class
- Intentional workforce development, trade school and military resources for our students and alumni
- Adventure and mentoring opportunities that expand student's experiences beyond New York City

Thanks to the efforts of our partners, grantees, and peer organizations, we are now closer to reaching the goal of giving more young people the opportunity to connect with and learn with peers from other places and backgrounds.

No One Gets There Alone,



Gilda Gomez
Executive Director



NO ONE GETS THERE ALONE

OUR MISSION

Elevate New York builds long-term, life-changing relationships with you, equipping them to thrive and contribute to their community. Our vision is to empower a generations of thriving leaders.

We believe

- every child is of great worth and has the desire and potential for success
- long-term, 24/7/365 relationships with a caring adult have positive proven outcomes in the lives of our youth
- a holistic approach is essential for a strong and healthy future for our youth
- full-time, salaried, teacher mentors who come from similar backgrounds as the students have high capacity for positive influence
- servant leadership, leading from a posture of selflessness and service, is the foundation for leadership
- in the intrinsic dignity of every person to act accordingly
- that working in collaboration yields the best long-term results , acknowledging that the complex work in our community cannot be done single-handedly. Aligning efforts ensures that we are all stronger and more successful

OUR PROGRAM

Elevate New York improves the lives of New York City Title 1 public school students through four coordinated components: daily accredited classes, mentoring, adventure activities, and college and career training. These components introduce our students to positive and caring adult mentors who ensure they don't have to navigate through challenges alone. Our holistic approach to youth development provides social-emotional support to youth as they explore new experiences and face new challenges; providing them with the foundation necessary to flourish into leaders.

“ELEVATE IS A SECOND FAMILY. THEY MADE ME A BETTER PERSON, TAUGHT ME NEW SKILLS, AND SUPPORTED ME THROUGHOUT HIGH SCHOOL.”

THE YOUTH WE SERVE

SOUTH BRONX, NEW YORK



CLOSING THE GAP

28% of students reported they did not attend school one or more times per month because they felt unsafe

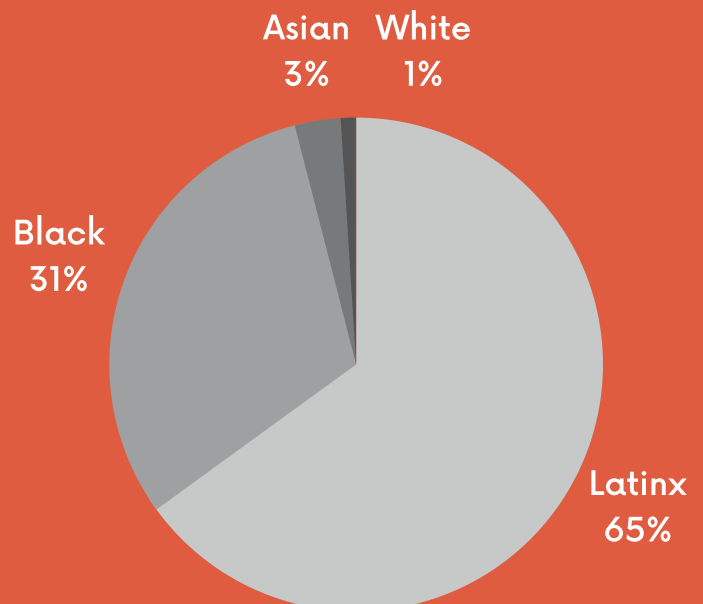
63% of students reported they do not live with their biological father

25% of students reported they moved one or more times in the past year

88% of students reported they do not read books or do homework with their family

100% of students reported they did not visit colleges with their families

ELEVATE YOUTH ARE...



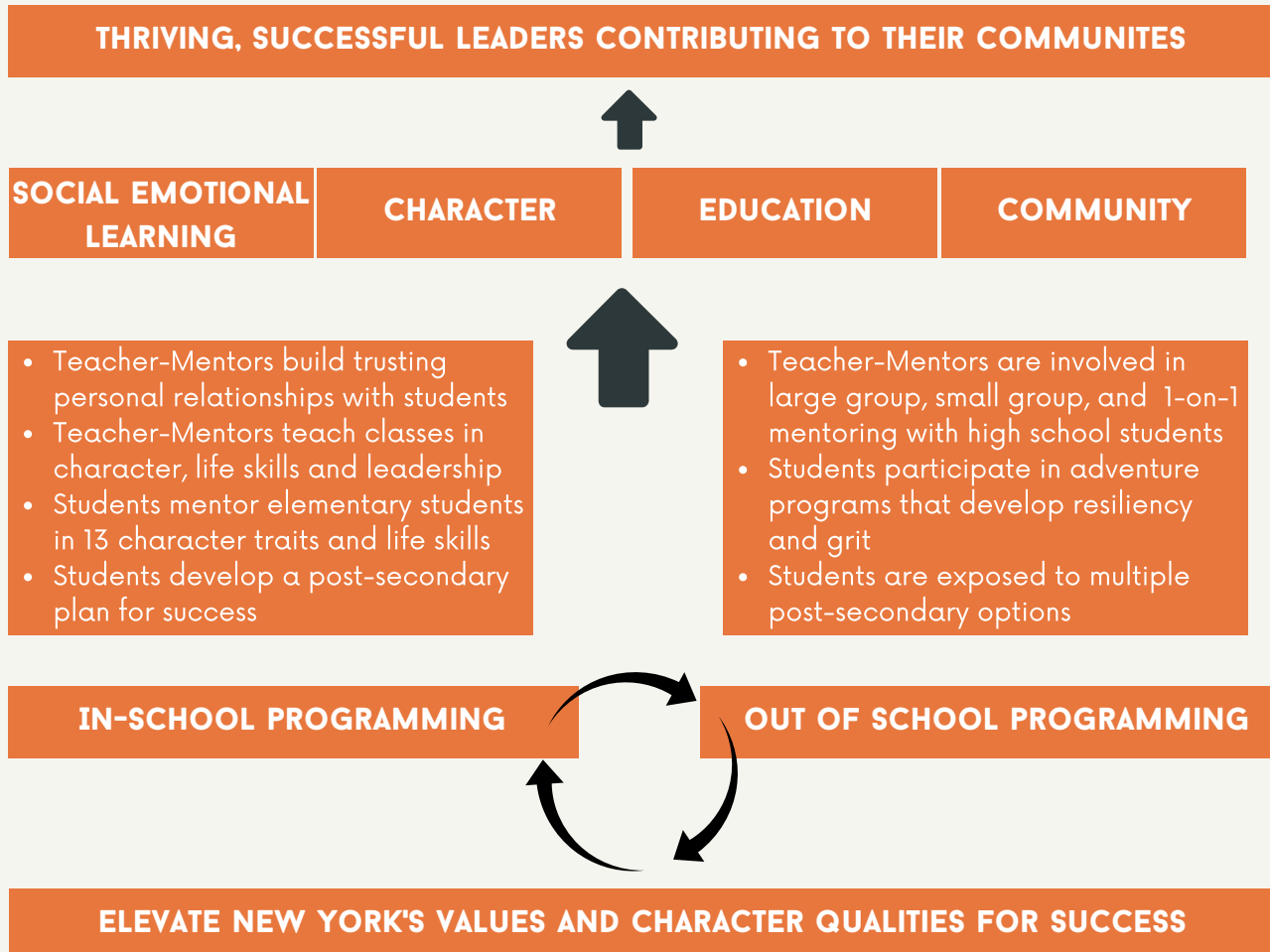
OUR STRATEGY

Elevate New York's program intends to fill the gap left by overworked and under-resourced social workers and guidance counselors. Over two decades of research conducted by the Collaborative for Academic, Social, and Emotional Learning has found students enrolled in social-emotional learning programs display improved classroom behavior, an increased ability to manage stress and depression, and better attitudes about themselves, others, and school. Incorporated into all Elevate New York's curriculum are thirteen character qualities designed to develop social-emotional skills and empower students to succeed.

Our thirteen skills and qualities are

- vision
- courage
- respect
- caring
- responsibility
- positive work ethic
- career-mindedness
- communication
- leadership
- problem-solving
- decision-making
- goal-setting

THEORY OF CHANGE



The 2020-2021 school year brought unique challenges as we continued to navigate the pandemic. Classes have remained 100% in person, but many leadership opportunities and extracurricular activities have been interrupted. Schools across the nation welcomed back students with increased levels of anxiety, stress, and depression. Our Teacher-Mentors have worked to continue making personal connections, empowering young leaders, and inspiring our young people despite recent challenges.

HOW WE MEASURE SUCCESS

PROGRAM OUTCOMES	KEY PERFORMANCE INDICATOR	METHOD OF COLLECTION
SOCIAL EMOTIONAL	Increased social and emotional capabilities	Pre and Post Surveys
CHARACTER	What did a student learn about character and how did they apply their knowledge?	Pre and Post Surveys
EDUCATION	Matriculation	School and Student Data
COMMUNITY	Community activities, family engagement, and volunteerism	Pre and Post Surveys

Long-term success levels the playing field for our students. Every twenty-six seconds a student in the United States drops out of high school, equaling over 1.2 million students every year (U.S. Department of Education). The U.S. Bureau of Labor and Statistics determined that the unemployment rate for adults who did not complete high school is 47% higher than high school graduates. A strong relationship between student and teacher is the foundation for social-emotional programming in the classroom. The Collaborative for Academic, Social, and Emotional Learning's 2020 report proved that strong student-teacher relationships strengthened academic achievements, reduced chronic absenteeism, promoted self-motivation, strengthened self-regulation, and improved goal-making skills. A teacher's impact on a student can last well beyond their time in the classroom. Developing SEL skills in adolescence decreases the likelihood of receiving government assistance, criminal activity, spending time in a detention facility, drug use, depression, anxiety, and unplanned pregnancy.

365/24/7 SUPPORT

180

hours of accredited classes

80

hours of one-on-one mentoring



30

hours of adventure trips



27

hours of My Brother's Keeper programming



15

hours of group mentoring in a dedicated program space

10

hours of social emotional workshops

20

hours of home visits



30

hours of career training with our corporate partners and guest speakers

MEASURING IMPACT BY THE NUMBERS

60%

of students are not afraid to try new things



85%

of students helped struggling peers

66% of students share their personal problems with their Teacher Mentors



55%

of students reported that Elevate New York is the reason they passed their classes



66% of students reported they are engaged with school

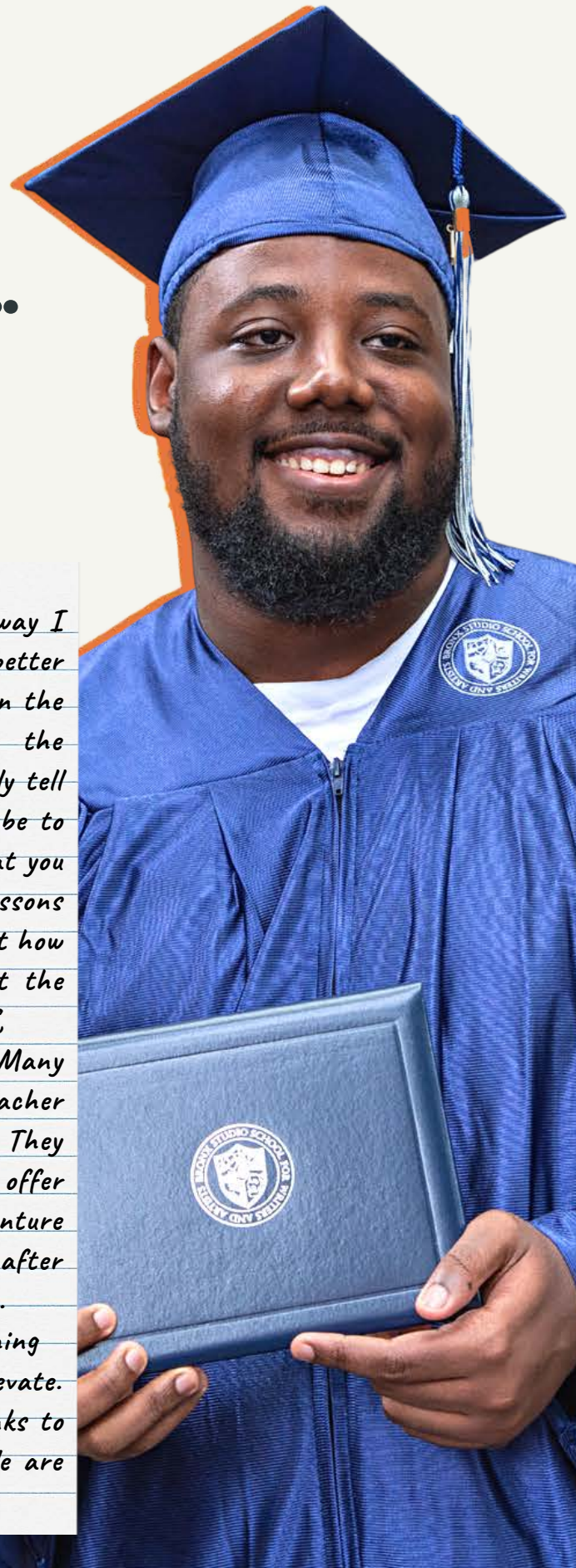


INSPIRED BY THEIR STORIES..

Class of 2021

MALIK

My first year as an Elevate student changed the way I view the world around me, leading me to become a better version of myself. I was so happy when I was given the opportunity to continue with Elevate through the remainder of my time in high school. If I could only tell future students one thing about Elevate, it would be to not take your time for granted and to learn all that you can. Elevate helped me navigate high school. The lessons I learned in the classroom taught me to think about how my actions will affect me in the future, not just the present. Once I began thinking about my future self, I felt a strong drive to better myself and succeed. Many times, throughout my Elevate journey my Teacher Mentors recognized that I was having an off day. They always took time to speak with me one-on-one and offer whatever support I needed. During one of our Adventure trips, I spoke with an Electrical Engineer and after hearing his story, I decided to research engineering. I decided to major in Electrical Engineering, something I would have never been introduced without Elevate. Elevate New York students are one of a kind thanks to our Teacher Mentors and the Elevate program. We are equipped with the skills we need to be successful.



100%

of students who have completed 3 or more semesters of Elevate programming are on track to graduate on time, compared to the New York City average of 71%



65.5%

of students who have completed 1 or 2 semesters of Elevate programming are on track to graduate on time, compared to the New York City average of 71%

Class of 2021

IMANI

My Teacher Mentors made sure that I was heard and understood as I navigated remote and hybrid learning, the hardest year of high school. Elevate helped me discover my love for psychology and my passion for helping people. Listening to the stories of our guest speakers and feeling comfortable asking my Teacher Mentors questions, brought me clarity, and made me feel less alone. I will carry the lessons Elevate taught me for the rest of my life.



Class of 2020

PAOLA

Elevate helped me develop a plan to achieve my goals. My Teacher Mentors built up my confidence and now I feel comfortable with saying I want and need. They provided me with the opportunity to attend the Harvard LEAD Conference and I left feeling empowered as a woman of color. I knew I could do anything that I set my mind to. I am currently in college and have started my own small business because of the confidence I have in myself.



Class of 2021

ANGEL

I am grateful that Elevate helped me develop into the leader that I am today. They prepared me for life after school by educating me on all my post-secondary options. My Teacher Mentors made the transition out of high school easier by helping me build a resume, expanding my leadership skills, and encouraging me to find a major I enjoyed, business. The connections I made during my time with Elevate are extremely valuable.



**ELEVATE NEW YORK HAS
SERVED MORE MORE THAN
2,100 STUDENTS SINCE 2009.**



CONTACT US



@ELEVATENY



@ELEVATENEWYORK

Gilda Gomez, Executive Director
ggomez@elevatenewyork.org

Kara King, Development Director
kking@elevatenewyork.org

WWW.ELEVATENEWYORK.ORG